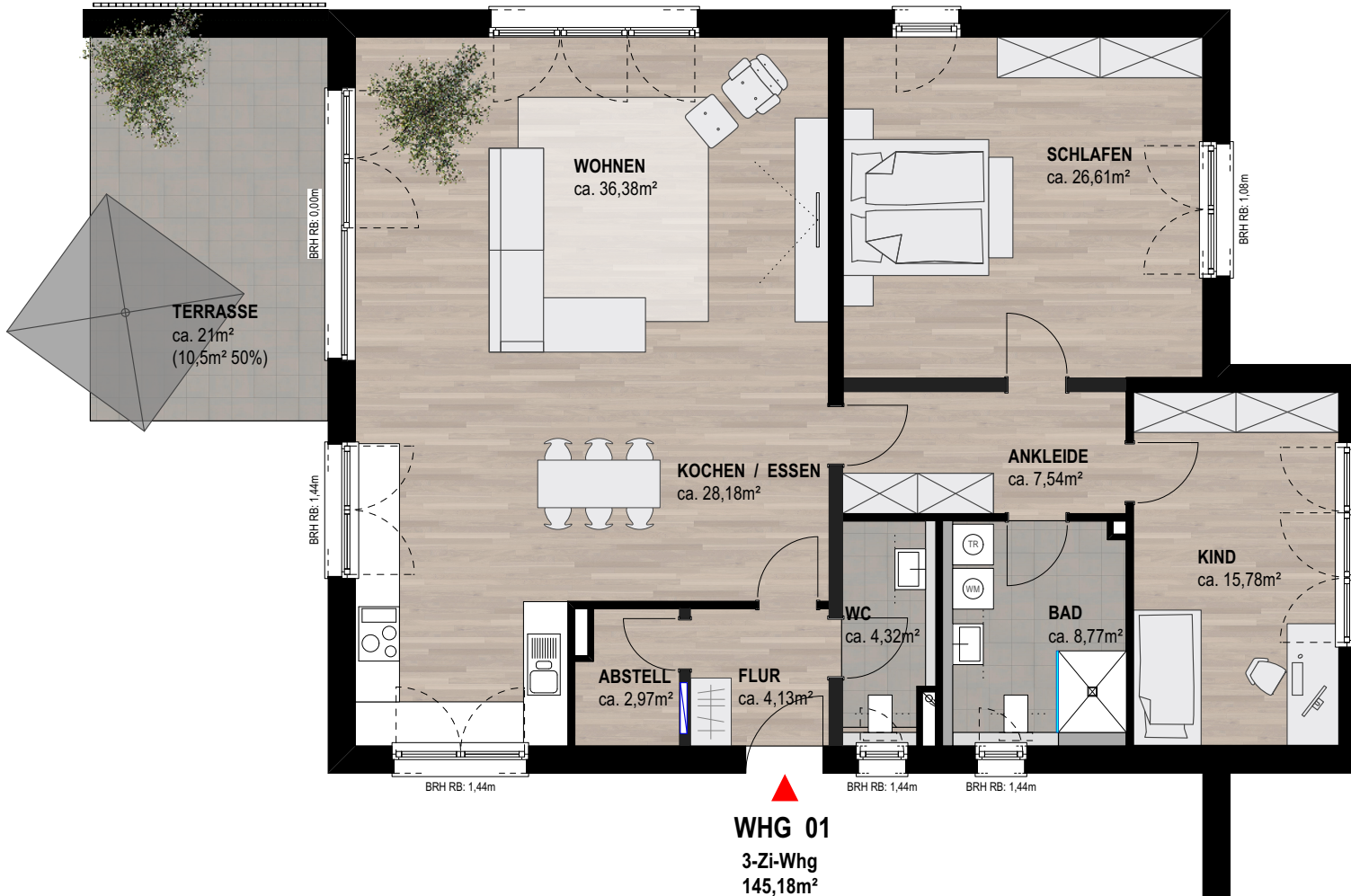
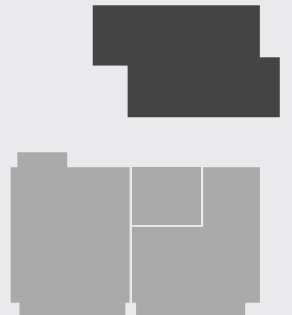


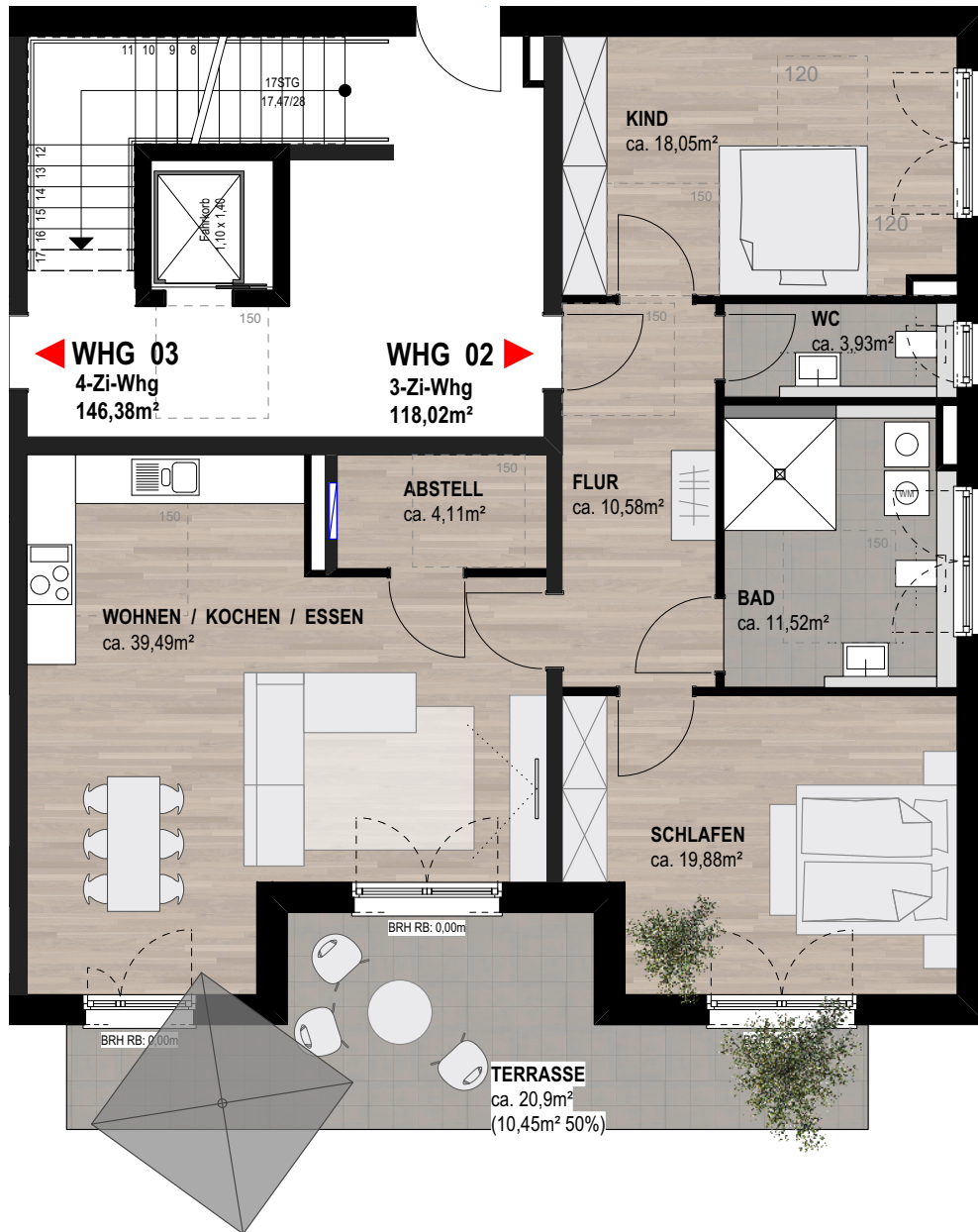
## WHG 01 Erdgeschoss



Windfang	4,13
Abstell	2,97
WC	4,32
Kochen/Essen	28,18
Wohnen	36,38
Ankleide	7,54
Schlafen	26,61
Kind	15,78
Bad	8,77
Terrasse	10,50

**Wohnfläche 145,18**





◀ **WHG 03**  
 4-Zi-Whg  
 146,38m<sup>2</sup>

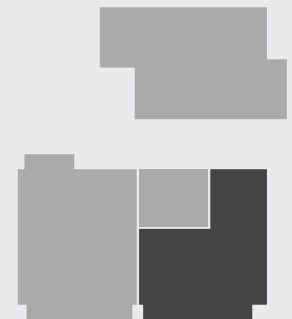
**WHG 02** ▶  
 3-Zi-Whg  
 118,02m<sup>2</sup>

## WHG 02 Erdgeschoss

Flur	10,58
WC	3,93
Zimmer 1	18,05
Bad/WC	11,52
Schlafen	19,88
Wohnen/Kochen/Essen	39,49
Abstell	4,11
Terrasse	10,46

---

**Wohnfläche** **118,02**

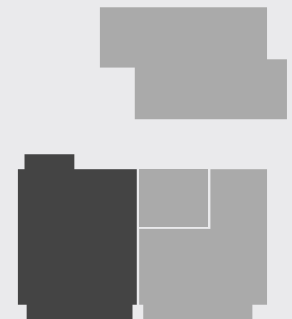




## WHG 03 Erdgeschoss

Flur	9,41
Garderobe	4,32
WC/Bad	6,14
Wohnen/Kochen/Essen	53,76
Abstell	3,23
Kind 1	12,35
Kind 2	12,46
Schlafen	20,19
Bad	10,54
Terrasse 1	3,75
Terrasse 2	10,23

**Wohnfläche 146,38**

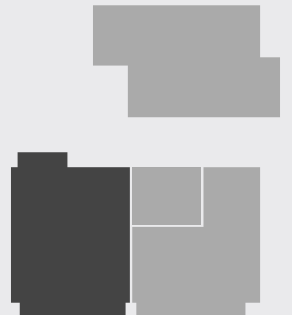


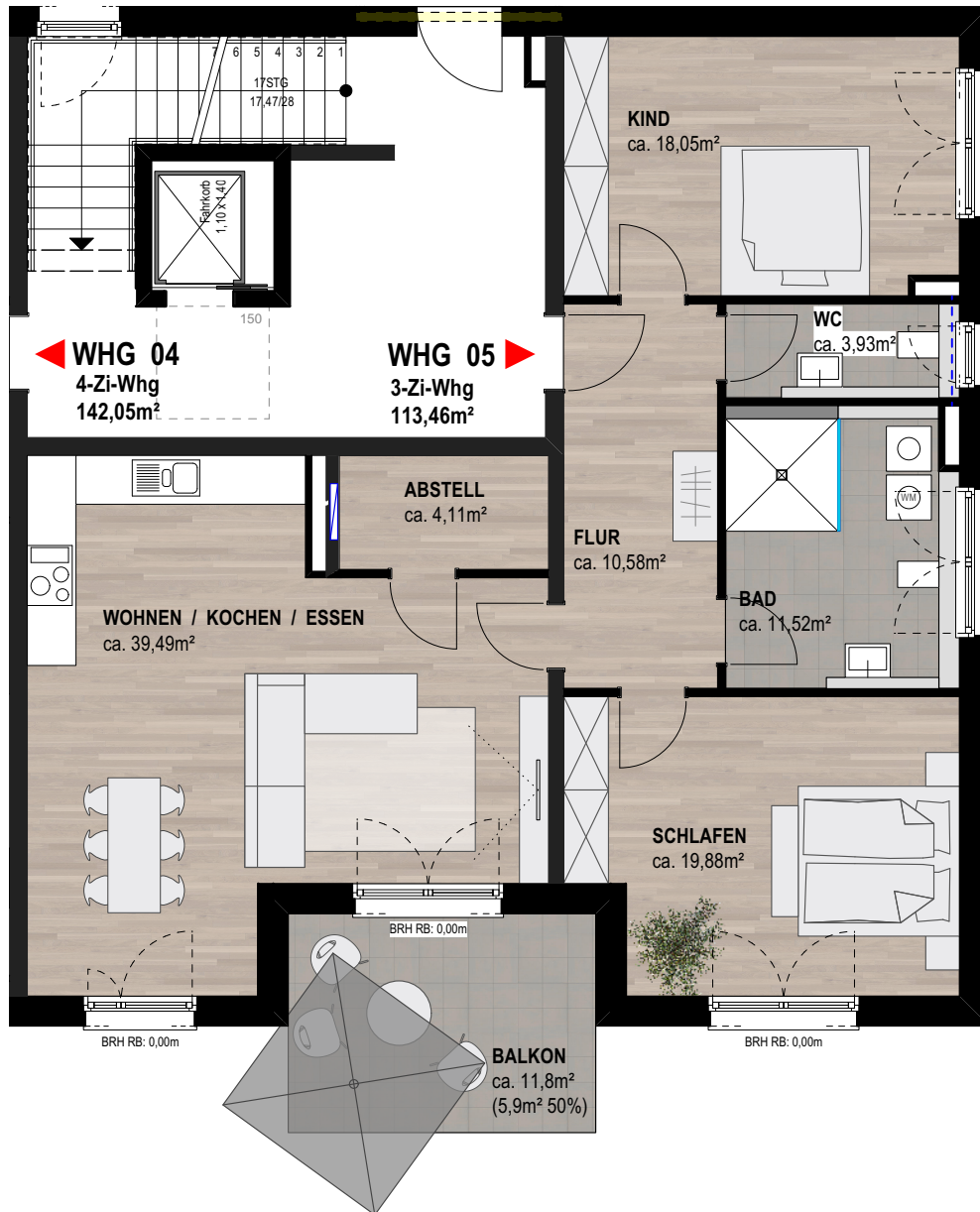


## WHG 04 1. Obergeschoss

Flur	9,41
Garderobe	4,32
WC/Bad	6,14
Wohnen/Kochen/Essen	53,76
Abstell	3,23
Kind 1	12,35
Kind 2	12,46
Schlafen	20,19
Bad	10,54
Balkon 1	3,75
Balkon 2	5,90

**Wohnfläche 142,05**

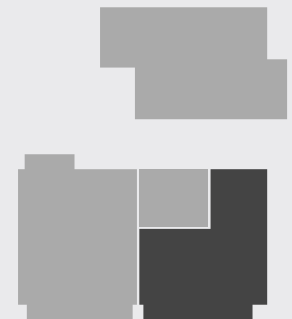




## WHG 05 1. Obergeschoss

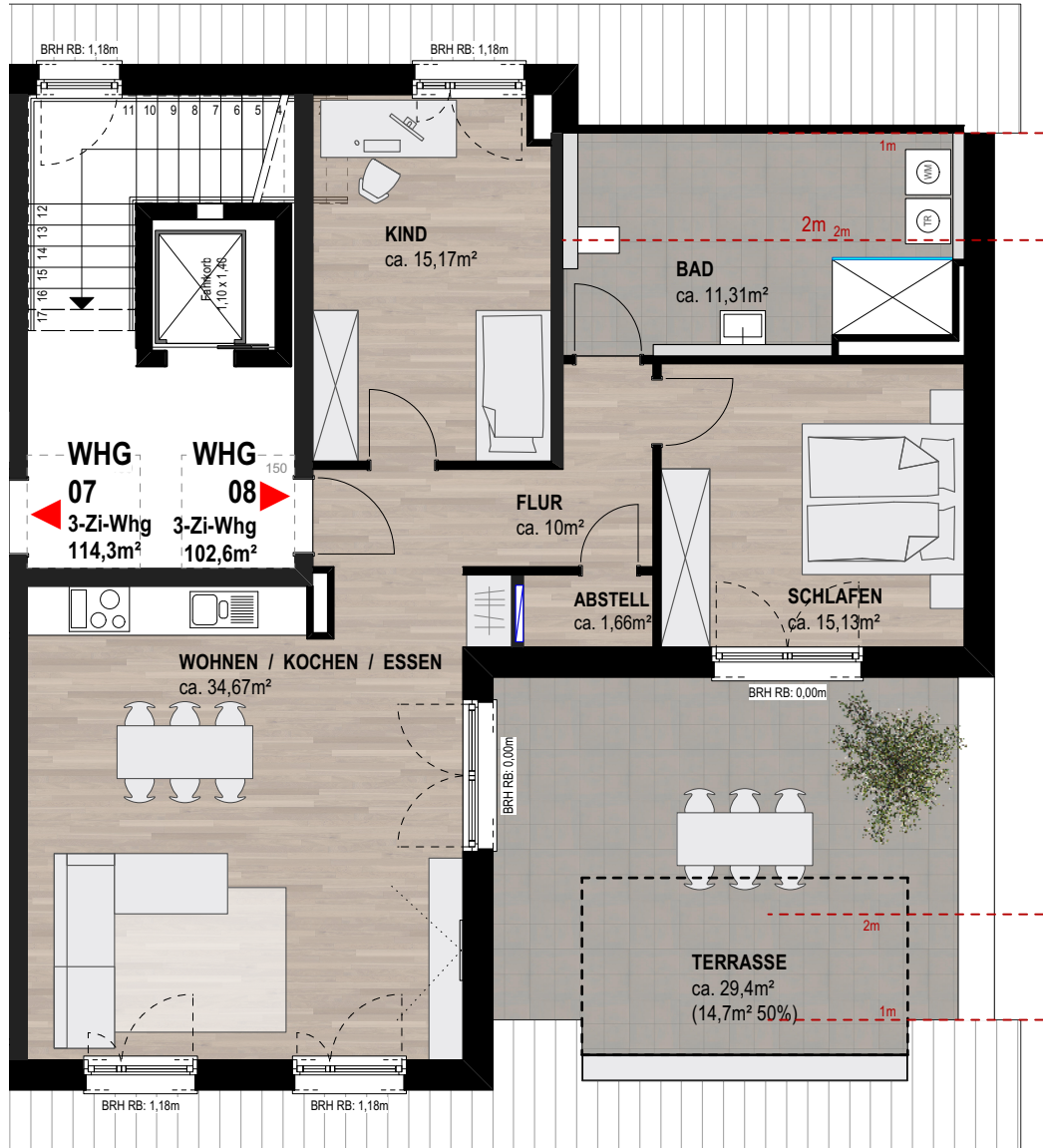
Flur	10,58
WC	3,93
Zimmer 1	18,05
Bad/WC	11,52
Zimmer 2	19,88
Wohnen/Kochen/Essen	39,49
Abstell	4,11
Balkon	5,90

**Wohnfläche 113,46**





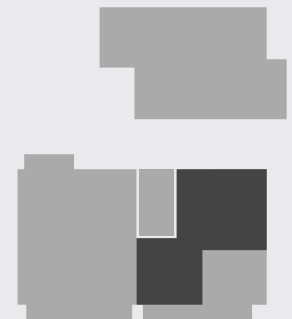




## WHG 08 Dachgeschoss

Flur	10,00
Kind	15,17
Abstell	1,66
Bad	11,31
Schlafen	15,13
Wohnen/Kochen/Essen	34,67
Terrasse	14,70

**Wohnfläche** 102,64



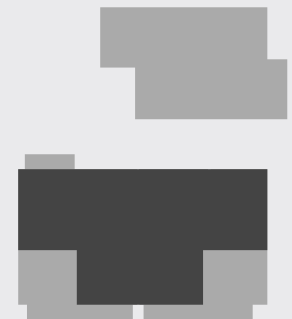


## WHG 07 / Dachgeschoss Variante Penthouse

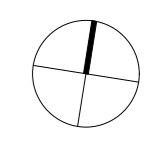


Flur	20,35
Garderobe	4,54
Abstell	5,58
WC	5,52
Wohnen/Kochen/Essen	71,68
Kind 1	20,56
Ankleide	9,52
Schlafen	20,23
Bad 1	12,57
Kind 2	20,36
Bad 2	11,98
Terrasse 1	12,90
Terrasse 2	14,71

**Wohnfläche 230,50**







<b>PROJEKT</b> MFH mit 7 WE, Kastanienweg 1, Neustadt	<b>NR:</b> 011
<b>BAUHERR</b> Gerst Projektbau GmbH, Bahnhofstraße 171, 67480 Edenkoben	<b>INDEX:</b>
<b>DATUM</b> 05.12.2022	<b>FORMAT:</b> A2
<b>LPH</b> Sondernutzungsplan Erdgeschoss	<b>MASSTAB:</b> 1:133
<b>PLAN</b> GR_EG_SNR	

**SCHRÖCK.**  
ARCHITEKTURBÜRO

Architekturbüro Schröck  
Alttheinbogen 11 | 68775 Ketsch  
06202.4091141 | 0177.6539128